

## CLEAR ROLLER SHUTTER

Shutter

FEATURES

SECURE

ROBUST

EASILY  
INSTALLED



## CLEAR ROLLER - Shutter

The CLEAR ROLLER SHUTTER is a popular design for the retail industry, offering excellent security combined with the ultimate in style and strength. Allow the after hour display to further add dimension to the product range and take advantage of the increased marketing opportunity.

The CLEAR ROLLER SHUTTER is designed to enable the public a vision of the merchandise whilst providing security and vermin proof protection.

## Our Product Range

Quality in every product



A1000  
Tilt Up Door



A1500  
Fully Recessed Door



A2000  
Hingeway Door



A3000  
Foldaway



A5000  
Vertical Lift



STADIUM  
Roller Grille



ARCADE 2  
Roller Shutter



ARCADE 3  
Roller Shutter



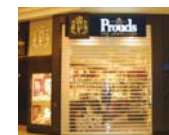
MIKADO  
Folding Door



SLIMLINE  
Roller Shutter



CASINO  
Aluminium Roller Grille



CLEAR ROLLER  
Roller Shutter



Q 100  
Steel Roller Shutter

# Features and Benefits

**Curtain** Constructed of clear polycarbonate extrusions having depth of 100mm interlocking with symmetrical aluminium extruded members of 30mm to form a continuous hinge. Each aluminium member is fitted with moulded end clips to prevent lateral movement and provide smooth operation within the side guides. As manufactured by ARCO (QLD).

**Side Guide** 50mm x 33mm extruded aluminium with false back for concealing fixings. Optional Nylofelt Buffer is available.

**Locking** Mid rail or bottom rail is centrally mounted, two way Mortice Key Lock or Sliding Shoot Bolt Locking mounted within the bottom rail.

**Brackets** Manufactured from 90mm x 40mm mild steel.

**Roller Drum** Manufactured from 203 or 229mm spiral ducted tube attached to self lubrication drum wheels

and bearings rotating on a 34mm steel shaft. The shaft is fitted with helical springs designed to counter-balance the curtain weight throughout its operation. The drum is designed to give minimum deflection over the span.

**Mullions** Two piece extruded aluminium section that can be set to any angle and is used for wide openings and multiple door installations.

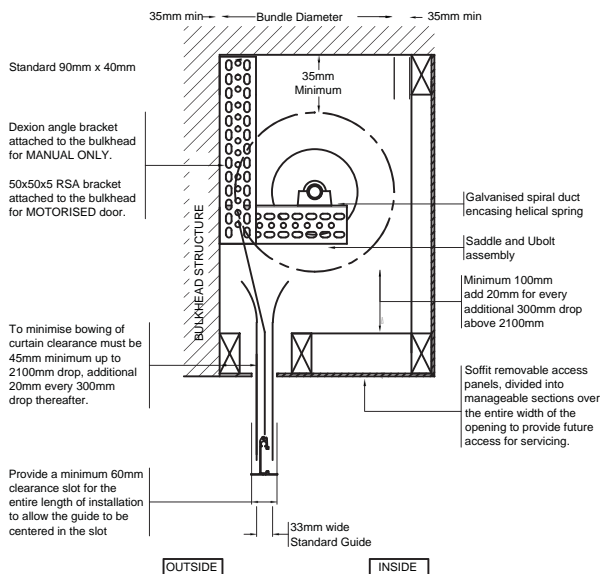
Mullions shall be 'lift out type' with shoot bolts to base. Special wide mullions fabricated from aluminium sheet shall be used when two grilles meet at an angle and no room exists for stacking (please refer mullion details).

**Operation** Manual hand operation as standard, chain and motorisation is optional as requested.

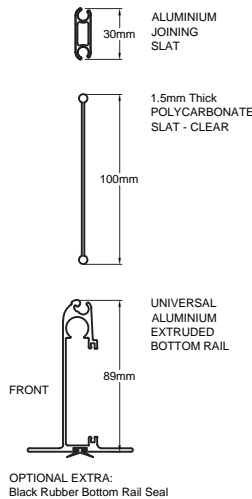
**Finish** Matt Natural Anodised as standard finish or standard Powdercoat Colours.

## Clear Roller Specifications

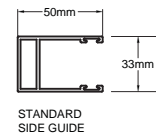
### Bulkhead Details



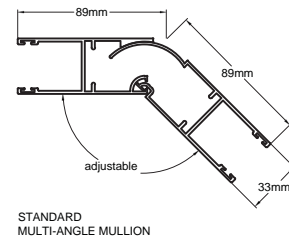
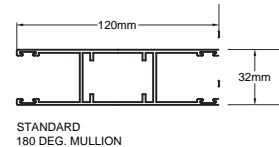
### Curtain Details



### Guide Details



### Mullion Details



### Bundle Diameter

Manual Door	Drop	1200	1500	1800	2100	2400	2700	3000	3300	3600
203mm Drum	Bundle	265	276	286	296	306	317	327	338	350
Motorised Door	Drop	1200	1500	1800	2100	2400	2700	3000	3300	3600
229mm Drum	Bundle	290	300	310	320	330	340	350	360	370

ARCO (QLD) has a continuous program of product development and reserves the right to change specifications at any time without notice.