

## SLIMLINE

Aluminium  
Roller  
Shutter

FEATURES  
SECURE

ROBUST

EASILY  
INSTALLED



## SLIMLINE - Aluminium Roller Shutter

SLIMLINE Aluminium Roller Shutter was purposely designed to meet the requirements for the retail, hospitality, tourism, education and club markets to offer exceptional protection, strong functional security with aesthetic appeal.

SLIMLINE Aluminium Roller Shutter is often designed and specified for use in Fire Hose Reel Cupboards, Counter Tops, Bar Tops and Doorways.

SLIMLINE Aluminium Roller Shutters is easy to operate and requires minimal maintenance. The SLIMLINE Roller Shutter can be manually operated or motorised depending on the purpose or function.

SLIMLINE Aluminium Roller Shutter is a manufactured 45mm x 1.5mm aluminium extruded slat designed to suit openings up to 2.4 metres high and up to 3.6 metres wide for manual operation.

## Our Product Range

Quality in every product



A1000  
Tilt Up Door



A1500  
Fully Recessed Door



A2000  
Hingeway Door



A3000  
Foldaway



A5000  
Vertical Lift



STADIUM  
Roller Grille



ARCADE 2  
Roller Shutter



ARCADE 3  
Roller Shutter



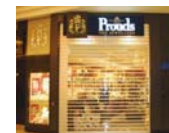
MIKADO  
Folding Door



SLIMLINE  
Roller Shutter



CASINO  
Aluminium Roller Grille



CLEAR ROLLER  
Roller Shutter



Q 100  
Steel Roller Shutter

# Features and Benefits

## Recommended Specification

SLIMLINE Aluminium Roller Shutter with 45mm x 1.5mm aluminium extruded slats, guides and bottom rail as manufactured by ARCO (Qld).

## Curtain

Constructed of 45mm x 1.5mm extruded aluminium slats and bottom rail joined together by nylon end clips. Nylon end clips are fitted to alternate slats to prevent lateral movement and provide smooth operation and long life performance free from lubrication.

For motorised operation a maximum measurement of 2000 mm high x 3000 mm wide.

An optional slotting is available to any number of slats. Vision panels can be slotted for ventilation or clear acrylic infill's can be fitted to the slotted slats providing a dust seal.

## Side Guides

50mm x 33mm extruded aluminium with false back for concealed fixings. Optional Nylofelt Buffer is also available.

## Locking

Locking shall be centrally mounted, Two Way Mortise Key Lock or Sliding Shoot Bolt Locking mounted within the bottom rail (it can be inside or outside locking). Optional waist high locking is also available.

If motorised, the standard application is to allow for one key switch (to be installed by others).

## Bottom Rail

Made from 90mm x 48mm extruded aluminum section incorporating locking device and concealed locking rods (for manual operation). An optional PVC Buffer is also available.

## Brackets

Manufactured from 90mm x 40mm mild steel.

## Roller Drum

Manufactured from 203mm or 229mm diameter spiral ducted tube attached to self lubrication drum wheels and bearings rotating on a 34mm diameter steel shaft (for manual operation).

The shaft shall be fitted with helical springs designed to counterbalance the curtain weight throughout its operation. The drum shall be designed to give minimum deflection over the span.

For motorised operation, the spiral weld is 230mm diameter and 38mm diameter steel shaft.

## Mullions

Made from 33mm x 120mm wide for inline two panel doors. For less than 180 degree angle, shall be two piece extruded aluminium section that can be set to any angle and can be applied for wide openings and multiple door installations. Mullions shall be "lift out type" with shoot bolts to base.

Special wide mullions are available and fabricated from aluminium sheet and used when two curtains meet an angle and no room is available for high stacking (please refer mullion details).

## Operation

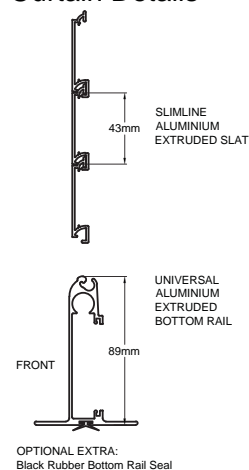
SLIMLINE Aluminium Roller Shutter is designed for manual hand operation as standard or motorisation or chain is optional as required.

## Finish

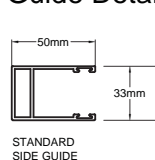
SLIMLINE Aluminium Roller Shutter is available in anodised finish and powder coated colours.

# SLIMLINE Specifications

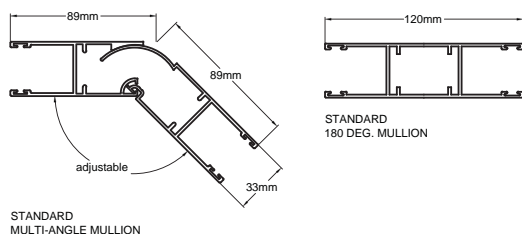
## Curtain Details



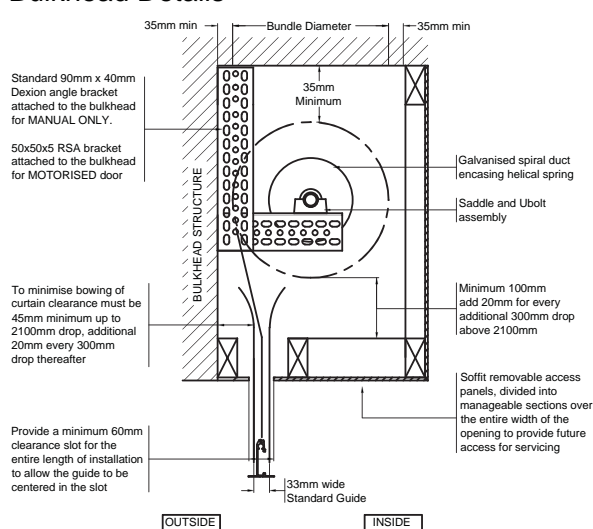
## Guide Details



## Mullion Details



## Bulkhead Details



## Bundle Diameter

Manual Door	Drop	1200	1500	1800	2100	2400	2700	3000	3300	3600
203mm Drum	Bundle	270	280	290	290	300	310	310	320	330
Motorised Door	Drop	1200	1500	1800	2100	2400	2700	3000	3300	3600
229mm Drum	Bundle	300	300	310	320	320	330	340	340	350

ARCO (QLD) has a continuous program of product development and reserves the right to change specifications at any time without notice.